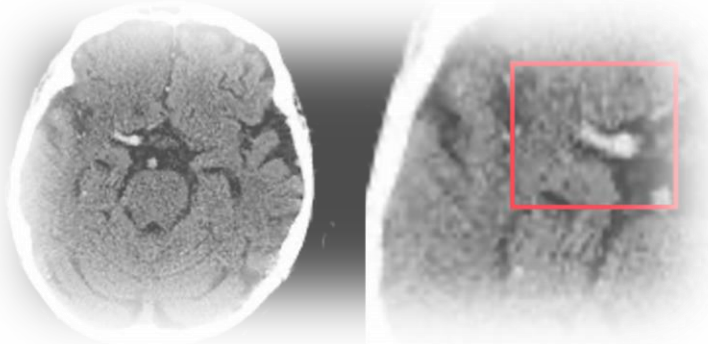


AI for Thrombectomy Triage on High-Resolution NCCT

Hyperdense MCA



ASPECTS

Ischemic core segments are shown in transparent red overlay.

○ Anatomic ASPECTS regions identified as normal are outlined in green.

○ Anatomic ASPECTS regions identified as infarct are outlined in red:

Right Internal Capsule, Caudate, Lentiform, Insula, M2, M6

Automatically generated ASPECT Score

4/10

Right	Left
C 31.3	C 31.3
IC 28.4	IC 28.4
I 30.3	I 30.3
L 29.5	L 29.5
M1 32.9	M1 32.9
M2 30.9	M2 30.9
M3 33.2	M3 33.2
M4 29.5	M4 29.5
M5 29.7	M5 29.7
M6 30.4	M6 30.4
4/10	4/10

appropriateness 5/5

- personalized
- good > harm

quality 4/5

- systems
- processes
- outcomes

Service 3/5

- patients
- providers

Cost 4/5

- providers
- patients
- societal

Waste 3/5

- human
- equipment